



The Tahquamenon Scenic Byway

63 Miles. Endless Memories.

We invite travel writers and all media members to explore the historic and beautiful Tahquamenon Scenic Byway. This kit is a tool to keep up with natural offerings of the region, interesting and insightful stories about the history and culture found in the area, notable events, fun facts and more.

For more information about the Scenic Byways or to schedule a media visit, please contact:

Newberry Chamber of Commerce (906) 293-5562

Paradise Chamber of Commerce (906) 492-3219

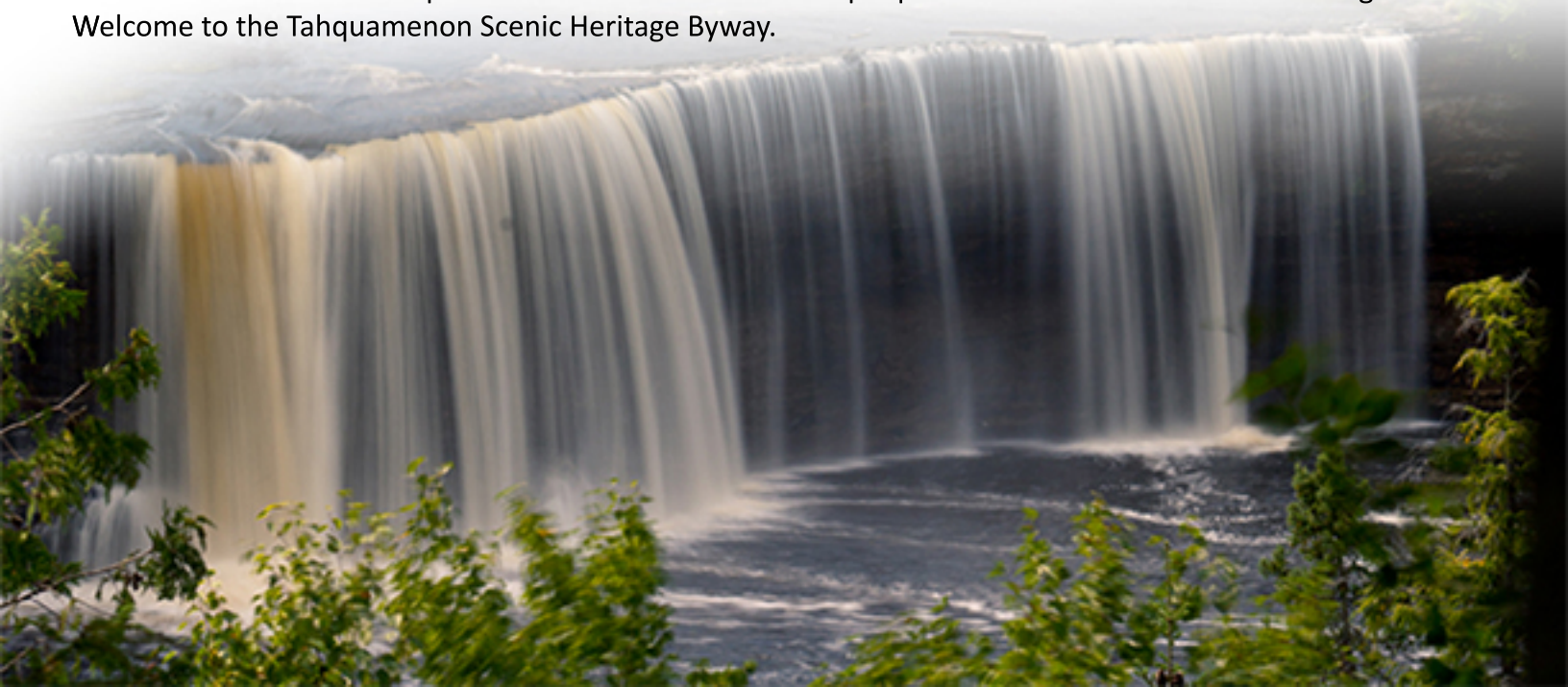
Eastern Upper Peninsula Regional Planning and Development (906) 635-1581

For more information please visit our website at www.exploreM123.com.

An Introduction

Welcome to the Tahquamenon Scenic Heritage Byway, a 63-mile journey through Michigan's Eastern Upper Peninsula. The Tahquamenon region is a vast untamed land, but the wind in the ancient forest sings a song of welcome to all who enter.

Explore the main route of Highway M-123 to experience the thunder of Tahquamenon Falls and the northern hospitality of villages like Newberry and Paradise, but leave time to branch out on byway spurs and visit our endless sandy beaches, silent lakes and restored lighthouses. This is the iconic North Woods we all seek, a place of simple beauty and deep history that cleanses the senses with cool breezes and rushing water. Set out on the North Country Trail at dawn. Climb the towers of three lonely lighthouses. Paddle the route of an old time log drive. Cast a line in a quiet pond. Wonder at the Northern Lights dancing in the darkest sky you've ever known. Welcome to a place where wildlife outnumber people and time is measured in tree rings. Welcome to the Tahquamenon Scenic Heritage Byway.





Great Lakes Shipwreck Museum



Whitefish Point Bird Observatory



Two Hearted River



Tahquamenon Logging Museum



Muskallonge State Park



Luce County Historical Museum



Upper Tahquamenon Falls



Lower Tahquamenon Falls



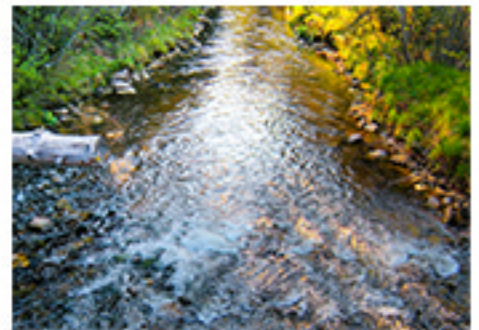
Crisp Point Lighthouse



Hamilton Lake Natural Area



Curly Lewis Memorial Highway



Eckerman Pond



Fast Facts

- On Highway 77 you'll pass the town of Seney and the Fox River where Ernest Hemingway set a famous Nick Adams story, "Big Two-Hearted River." Just to the northeast, on H37, drive over the Two Hearted River itself.
- The Upper Tahquamenon Falls drops water nearly 50 feet and is over 200 feet across, making it one of the largest falls east of the Mississippi, after those of Niagara.
- A maximum flow of more than 50,000 gallons of water per second has been recorded cascading over the Upper Tahquamenon Falls precipice.
- Tahquamenon Falls State Park encompasses close to 52,000 acres stretching over 13 miles.
- Route originally designated in 1998, re-designated in 2007.
- Management Plan updated in 2007.
- Tahquamenon Scenic Heritage Route Advisory Committee was officially "created" in 2011 with adoption of By-Laws.
- The Committee meets quarterly – at minimum – throughout the program year to manage development and promotional opportunities tied to the Byway.